



rrrncjh

Z0013162

021- 2062 5025

caoyoumi ng666

: caoyoumi ng@sd-gold.com

|

2020 6 2

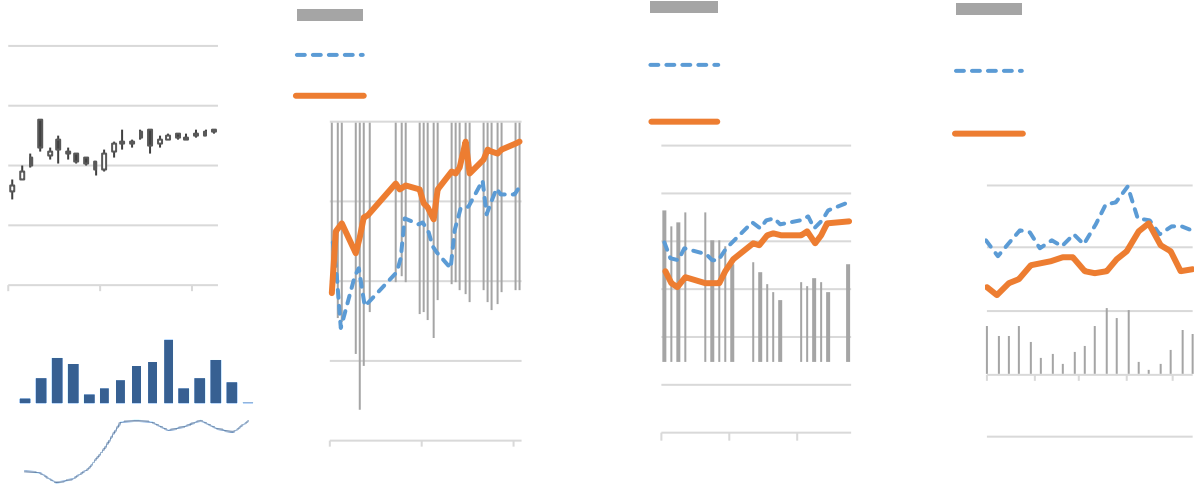
V





6340	2.6%	PP	SC	0.65%	PVC	
939	/	OPEC	PTA		5	1-2

1

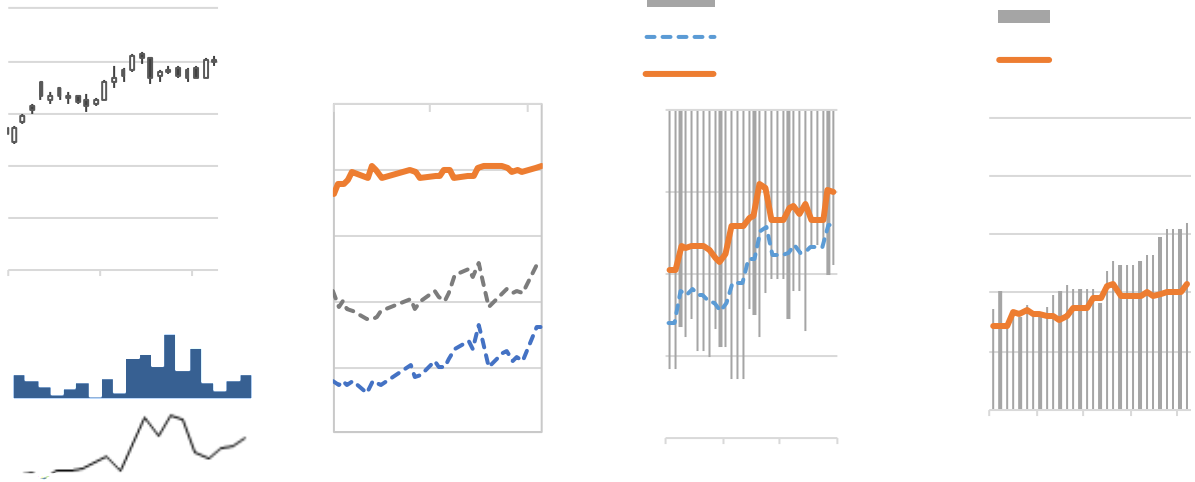


	WTI 08		35.79	/	35.9	/
08		38.32	/	38.61	/	INE 278.6 /
0.65%	5		939	/	OPEC	

1-2

PTA

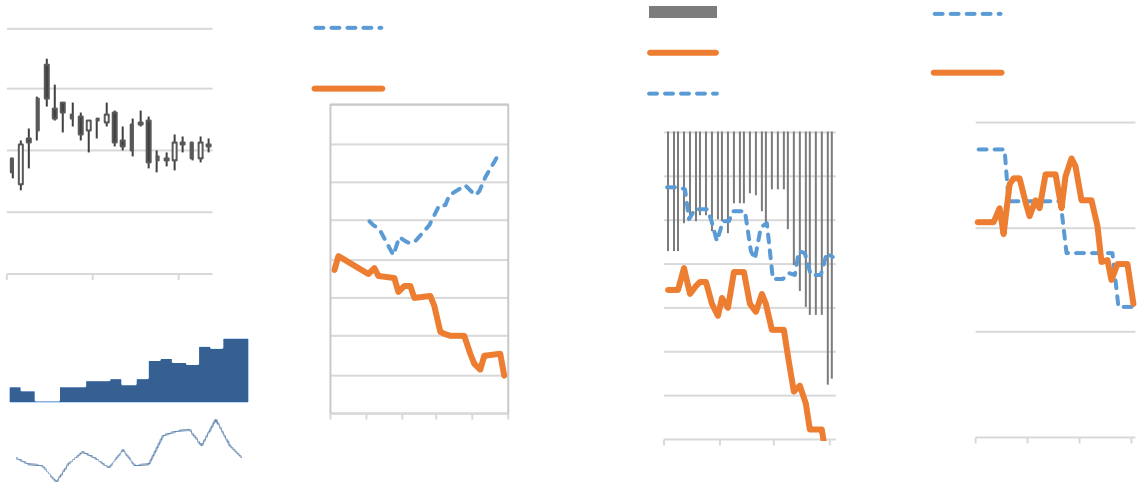
2 PTA



PTA	3698 /	0.49%	PTA	2009	105-110
115-120		3556-3600	PTA		
5000	3556-3586				
PX	PTA	87%,			

TA

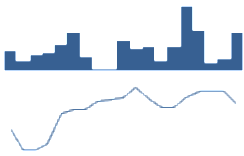
3



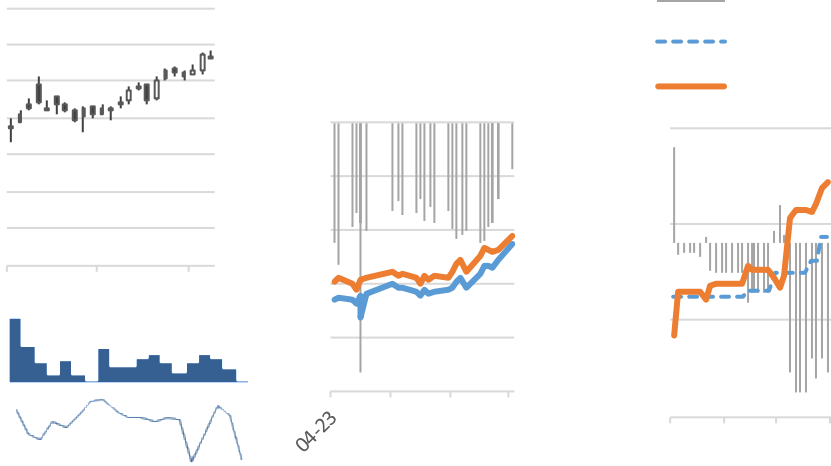
	1707 /		
1450-1520 /		1480-1630 /	1450-1460
/			



4 PVC



5



2634 / 1.23%

20-100 /

2350-2500

/

2440-2650 /

2500-2600 /